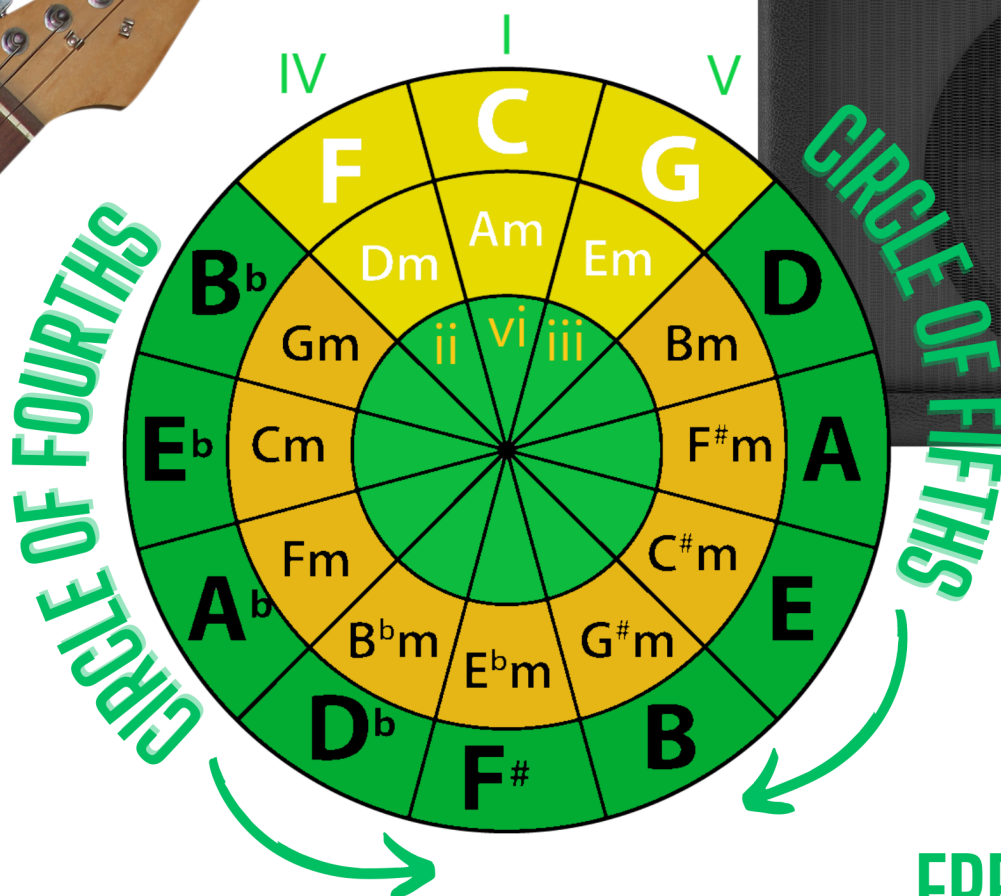


GUITAR GOBLIN PRESENTS



THE ULTIMATE GUITAR THEORY CHEAT SHEET

GuitarGoblin.com



FREETBOARD

E	F	Gb	G	Ab	A	Bb	B	C	Db	D	Eb	E	F	Gb	G
B	C	Db	D	Eb	E	F	Gb	G	Ab	A	Bb	B	C	Db	D
G	Ab	A	Bb	B	C	Db	D	Eb	E	F	Gb	G	Ab	A	Bb
D	Eb	E	F	Gb	G	Ab	A	Bb	B	C	Db	D	Eb	E	F
A	Bb	B	C	Db	D	Eb	E	F	Gb	G	Ab	A	Bb	B	C
E	F	Gb	G	Ab	A	Bb	B	C	Db	D	Eb	E	F	Gb	G
1	2	3	4	5	6	7	8	9	10	11	12	13	14	15	

FREETBOARD (NO FLATS/SHARPS)

E	F		G		A		B		C		D		E	F	G
B	C		D		E	F		G		A		B	C		D
G		A		B		C		D		E		F		A	
D		E		F		G		A		B		C		E	
A		B		C		D		E		F		G		A	
E	F		G		A		B		C		D		E	F	G
1	2	3	4	5	6	7	8	9	10	11	12	13	14	15	



SCALE DEGREE CHART

Key	I (Major)	ii (Minor)	iii (Minor)	IV (Major)	V (Major)	vi (Minor)	vii° (Diminished)
A	A	B	C#	D	E	F#	G#
A#	A#	C	D	D#	F	G	A
B	B	C#	D#	E	F#	G#	A#
C	C	D	E	F	G	A	B
C#	C#	D#	F	F#	G#	A#	C
D	D	E	F#	G	A	B	C#
D#	D#	F	G	G#	A#	C	D
E	E	F#	G#	A	B	C#	D#
F	F	G	A	Bb	C	D	E
F#	F#	G#	A#	B	C#	D#	F
G	G	A	B	C	D	E	F#
G#	G#	A#	C	C#	D#	F	G



POPULAR CHORD PROGRESSIONS

Chord Progression (Roman Numerals)	Nashville (Numbers)	Song Example	Song Part Featuring Progression
I-IV-V	1-4-5	"Johnny B. Goode" by Chuck Berry	Main Riff/Chorus
I-V-vi-IV	1-5-6-4	"Let It Be" by The Beatles	Verse
ii-V-I	2-5-1	"Black Magic Woman" by Santana	Chorus
I-IV-vi-V	1-4-6-5	"Don't Stop Believin'" by Journey	Chorus
I-vi-IV-V	1-6-4-5	"Every Breath You Take" by The Police	Verse
vi-IV-I-V	6-4-1-5	"Under the Bridge" by Red Hot Chili Peppers	Chorus
I-V-IV	1-5-4	"La Bamba" by Ritchie Valens	Main Riff/Chorus
I-III-IV-V	1-3-4-5	"Summer of '69" by Bryan Adams	Chorus
I-IV-ii-V	1-4-2-5	"Sweet Child o' Mine" by Guns N' Roses	Bridge
vi-ii-V-I	6-2-5-1	"Wonderwall" by Oasis	Pre-Chorus
I-VI-II-V	1-6-2-5	"Hotel California" by The Eagles	Verse



BASIC SCALES

Major Scale (Ionian Mode)



This scale illustration is in the key of G Major, which is also the I Mode.

Major Pentatonic Scale



This scale illustration is in the key of G Major Pentatonic. This scale removes the 4th and 7th degrees from the Major Scale.

Minor Scale (Aeolian Mode)



This scale illustration is in the key of G minor, which is also the vi Mode. The scale flattens the 3rd, 6th and 7th degrees of the Major Scale.

Minor Pentatonic Scale

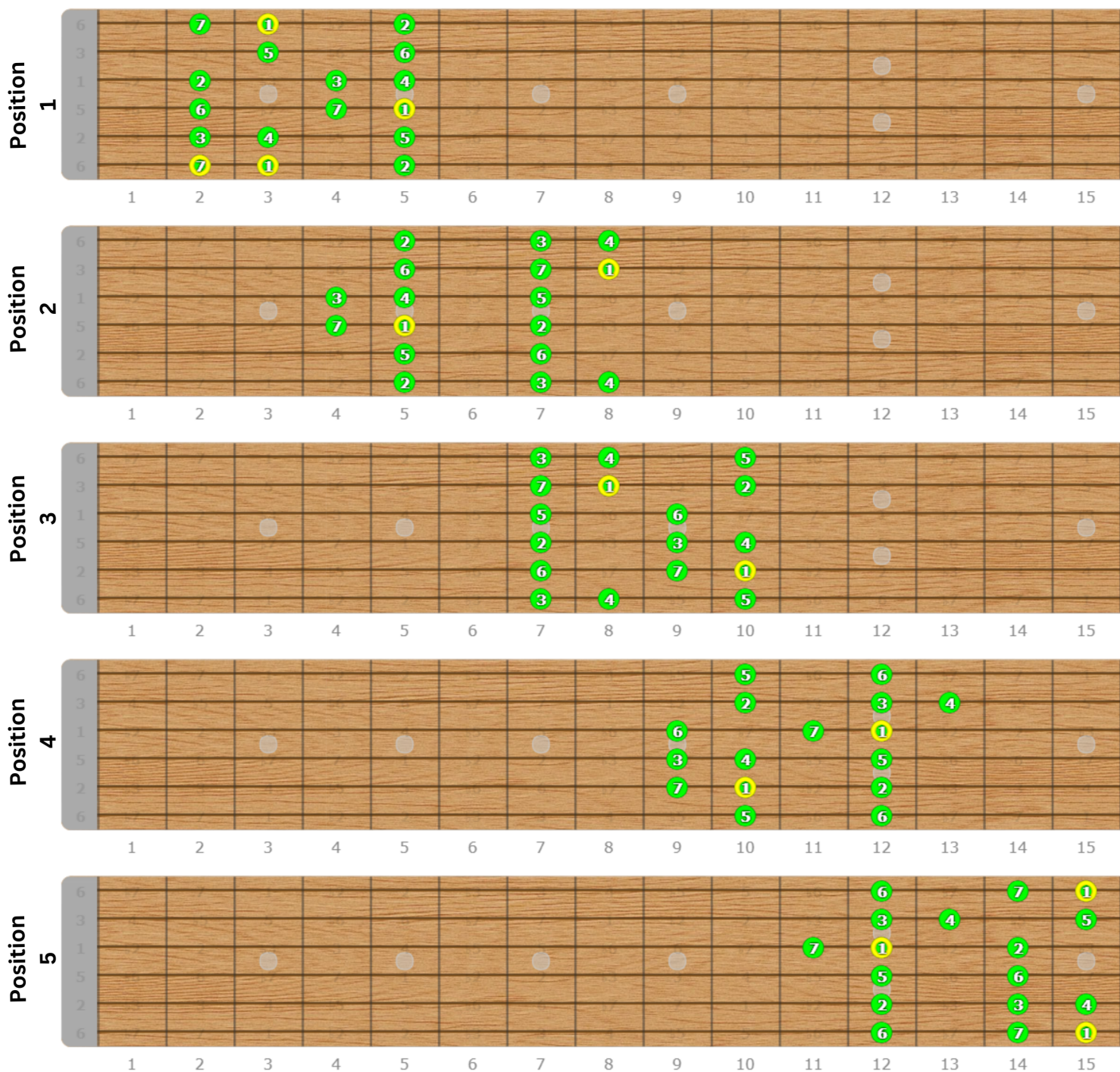


This scale illustration is in the key of G Minor Pentatonic. This scale removes the 2nd and b7th of the Natural Minor (or Aeolian) scale.



SCALE POSITIONS

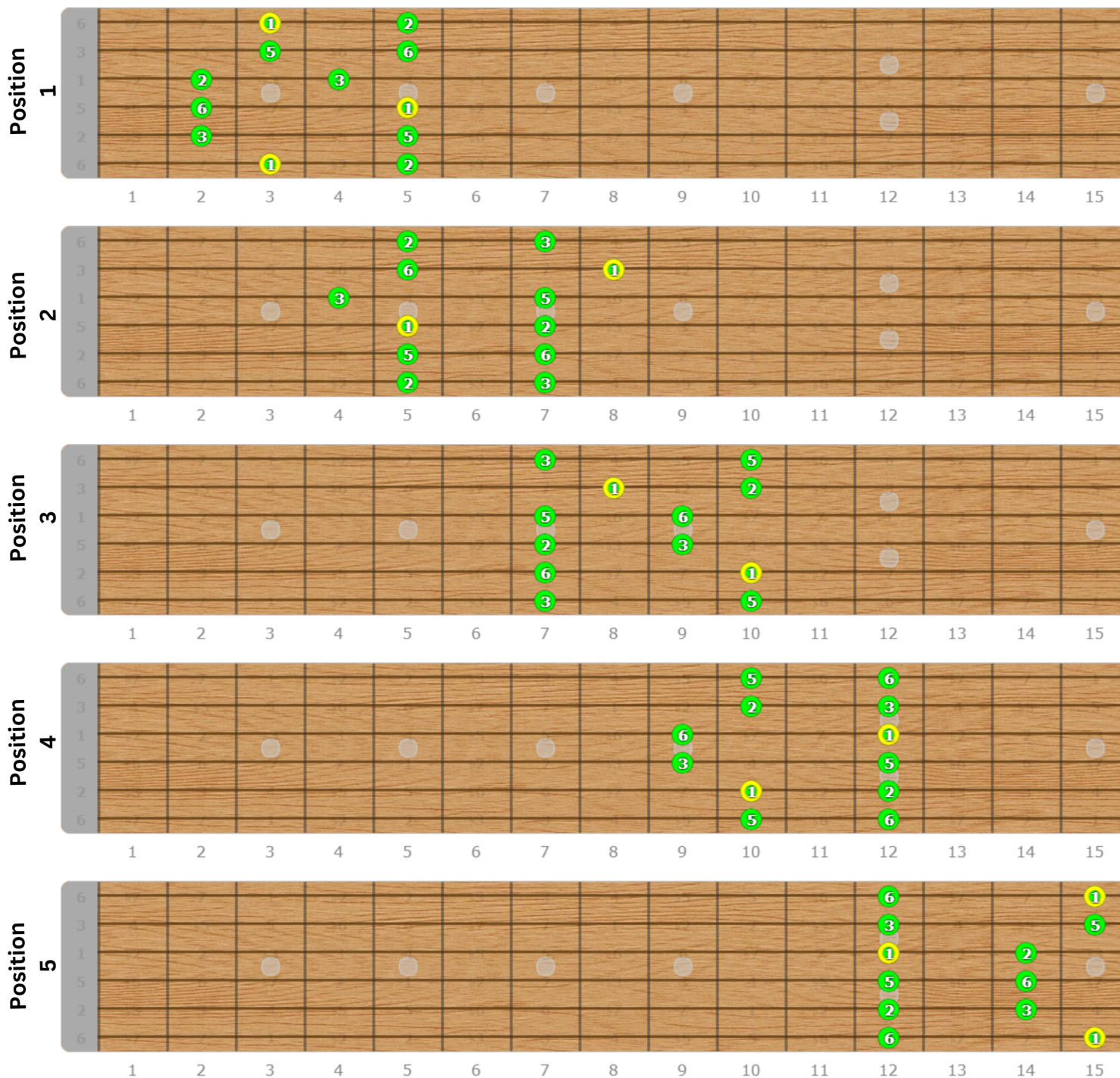
G Major Scale | Positions 1 - 5





SCALE POSITIONS

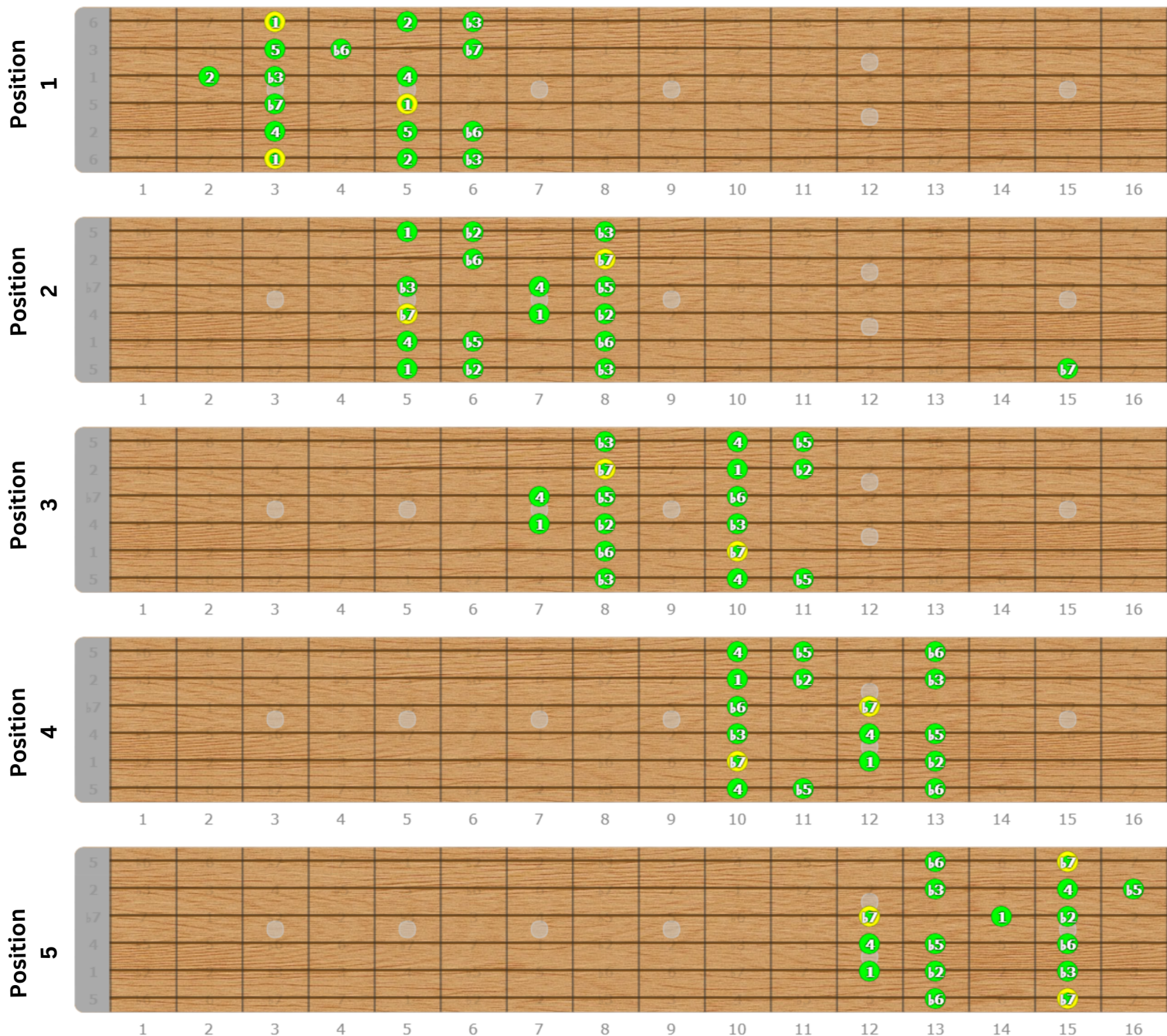
G Major Pentatonic Scale | Positions 1 - 5





SCALE POSITIONS

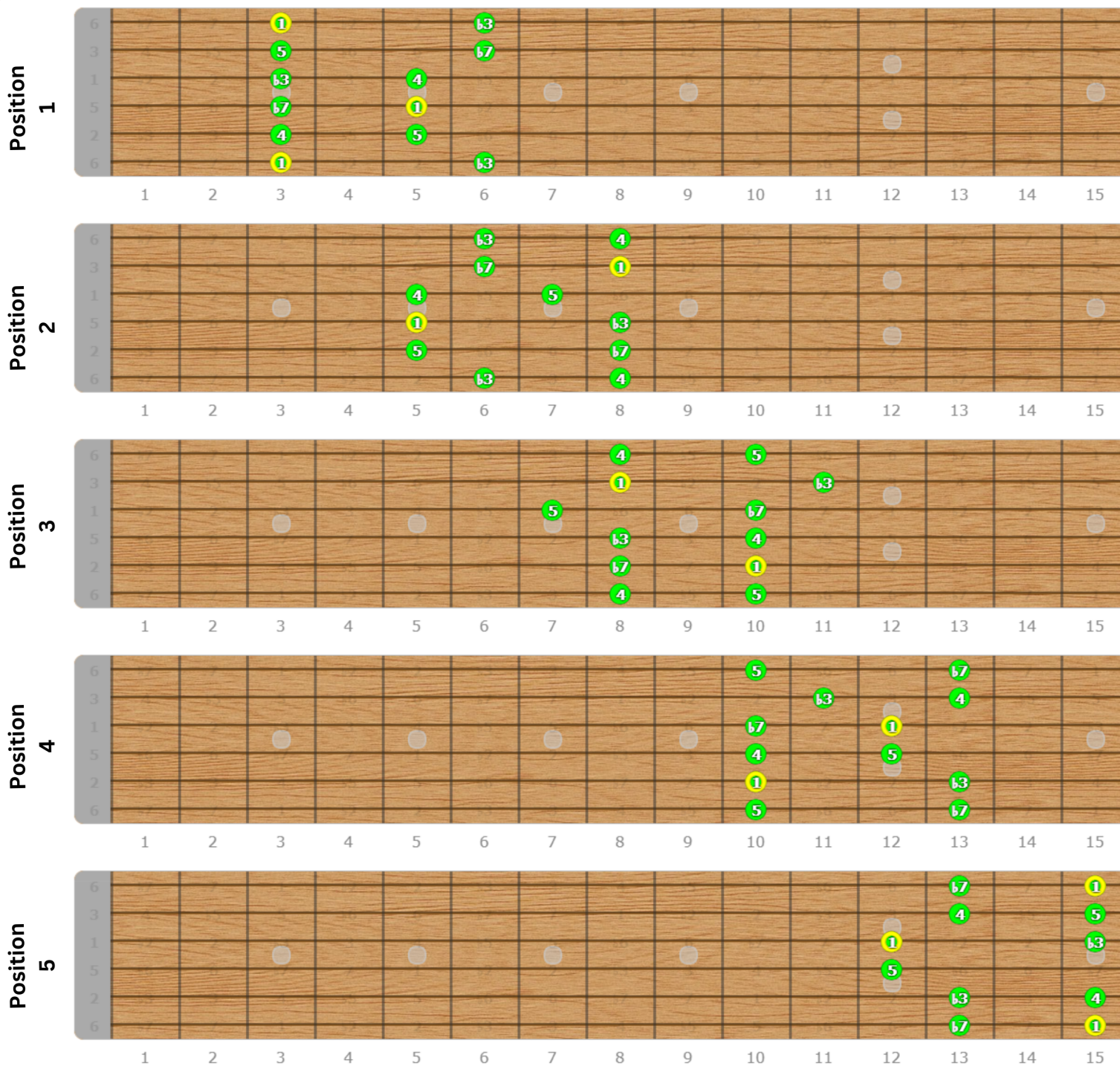
G Natural Minor Scale | Positions 1 - 5





SCALE POSITIONS

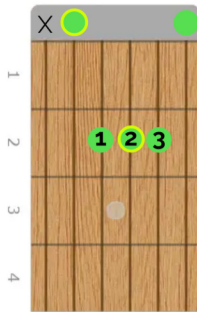
G Minor Pentatonic Scale | Positions 1 - 5



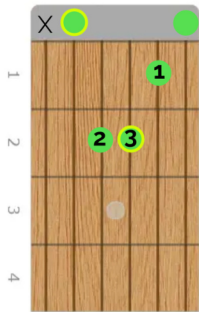


BASIC CHORDS

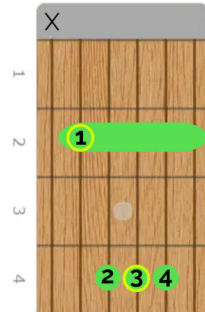
A Major



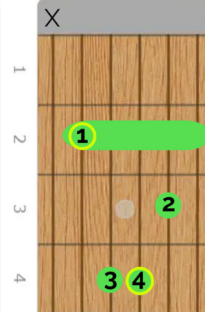
A Minor



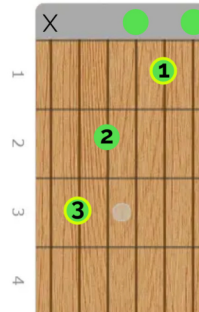
B Major



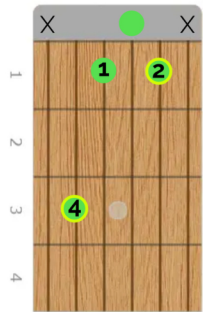
B Minor



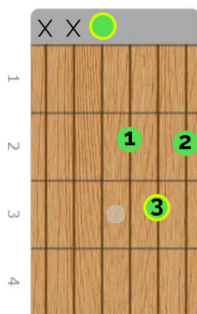
C Major



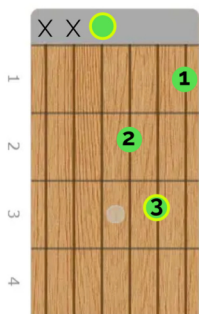
C Minor



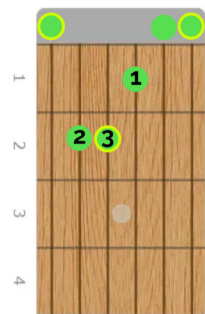
D Major



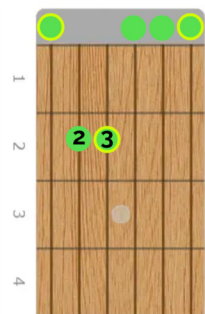
D Minor



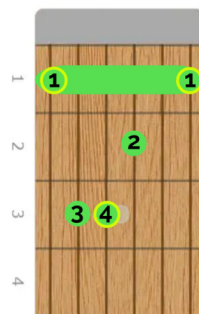
E Major



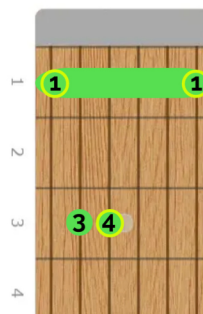
E Minor



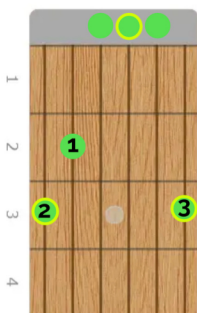
F Major



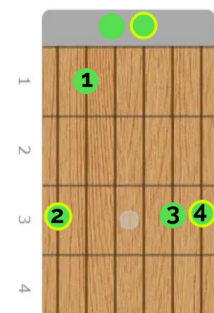
F Minor



G Major



G Minor





MOVABLE BAR CHORDS

E-Shaped Barre Chords (6th String)

Major



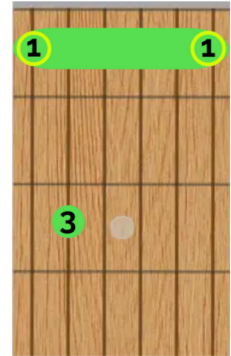
Minor



Major 7

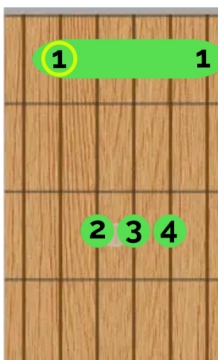


Minor 7



A-Shaped Barre Chords (5th String)

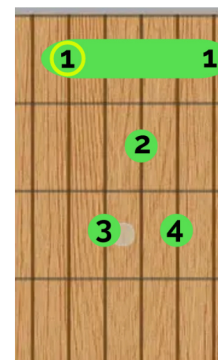
Major



Minor



Major 7



Minor 7

